

Plan E - THE TAVASTIA

TOYON SIGNATURE HOMES

PRELIMINARY

SQFT	3116
BEDROOMS	3-4
BATHS	3.5-4.5



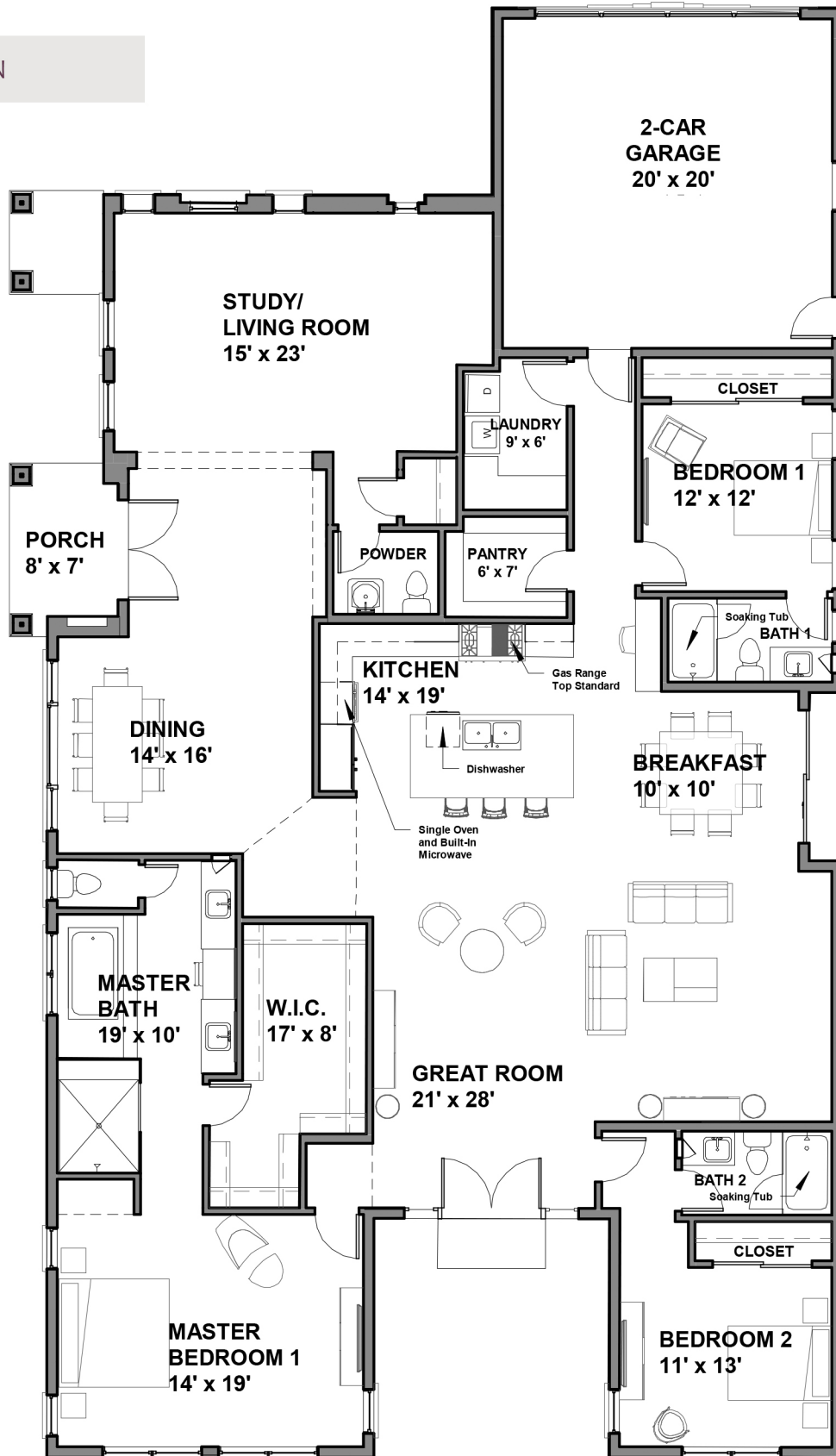
THE TAVASTIA HIGHLIGHTS

- The Tavastia single story home features a charming foyer with a high-ceiling and voluminous space evoking a feeling of grandeur and elegance of this magnificent home.
- The luxurious formal dining room offers an abundant space to seat 10 or more guests, making it perfect for entertainment.
- The lavish master bedroom suite is the perfect calm to end your day, featuring a beautiful double vanity with exquisite quartz countertops and a large his and her walk-in closet.
- Unique amenities to this home include an optional second master bedroom, perfect to serve as a Mother-in-Law suite.

Plan E - THE TAVASTIA

TOYON SIGNATURE HOMES

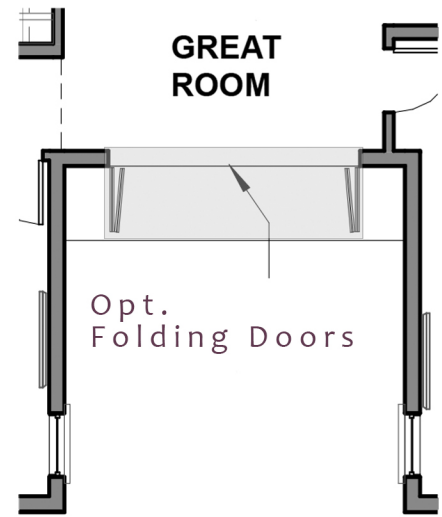
FLOOR PLAN



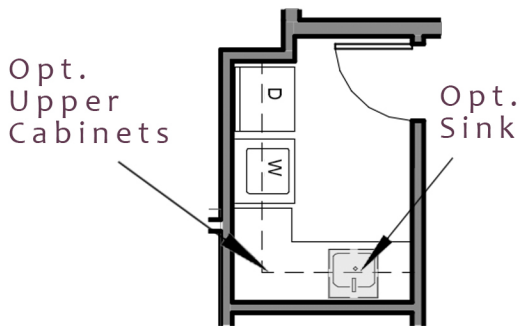
Plan E - THE TAVASTIA
TOYON SIGNATURE HOMES



OPT. MASTER BEDROOM 2

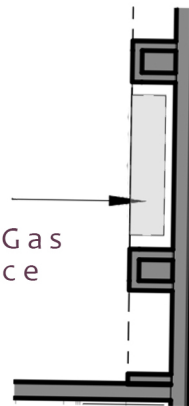


GREAT ROOM

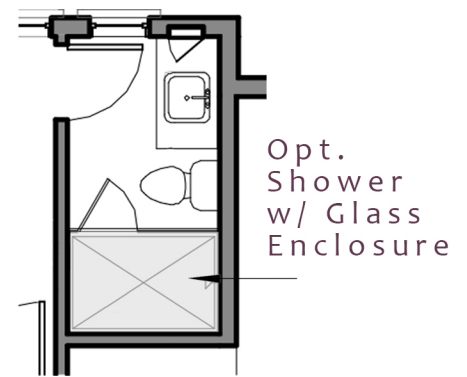


SINK AT LAUNDRY

Opt. Linear Gas Fireplace



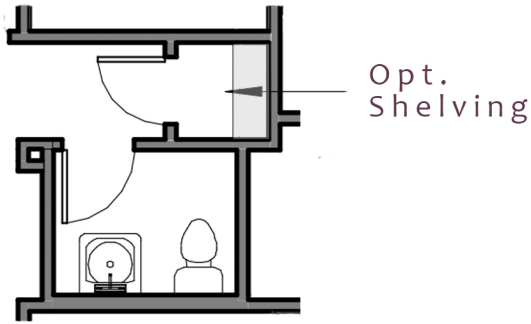
FIRE PLACE AT GREAT ROOM



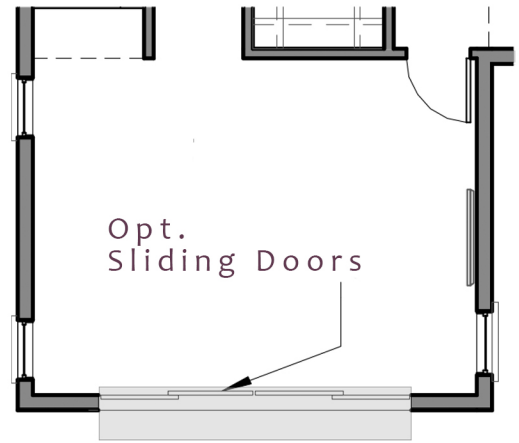
FULL SHOWER AT BATH 1

Plan E - THE TAVASTIA

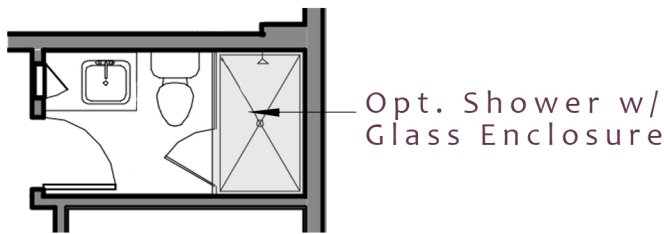
TOYON SIGNATURE HOMES



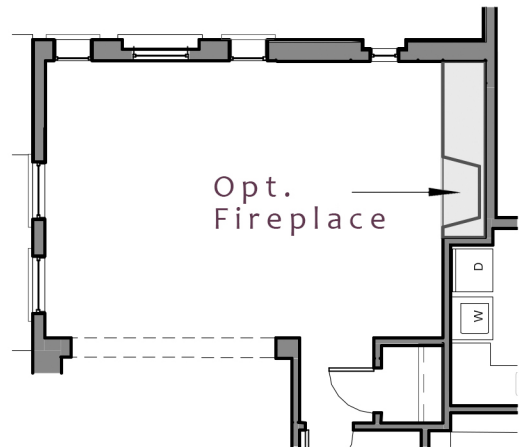
SHELVING IN LINEN CABINET



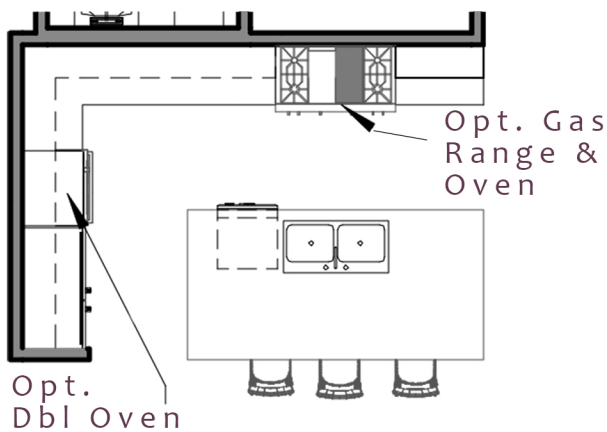
DOORS AT MASTER BEDROOM 1



FULL SHOWER AT BATH 2



FIREPLACE AT STUDY/LIVING



KITCHEN APPLIANCES

FLOOR PLAN OPTIONS CONT'D

805-498-7786 | www.hydamhomes.com

In the interest of continuous improvement, Hydam Homes LLC reserves the right to modify or change floor plans, materials and features without prior notice or obligation. Your sales agreement will contain all current information. All renderings are the artists concept and are not intended to be representative of specific architectural details. This is not an offering where prohibited by law.

Rev. 10-05-21

