

Plan G - THE MAISON

TOYON SIGNATURE HOMES

PRELIMINARY

SQFT	3718
BEDROOMS	4
BATHS	4.5

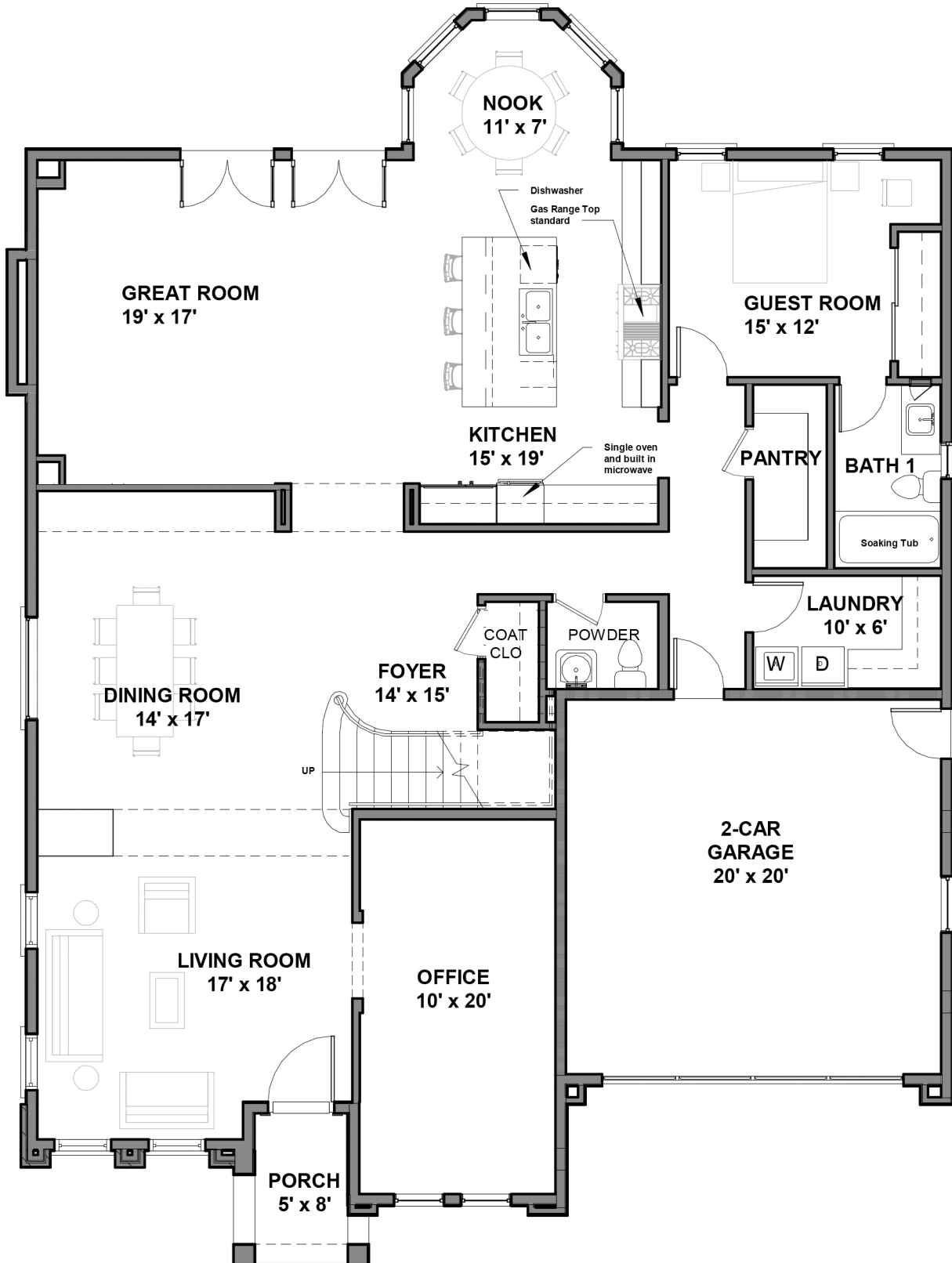


THE MAISON HIGHLIGHTS

- The most desirable and artistically created floor plan is the ultimate in luxurious living.
- Greeted by a grand entryway with elegant two-story ceilings, opening into the formal living and dining room sets the ambiance for your guests.
- The spacious interior offers an elegant floorplan featuring a gourmet kitchen with ample counter space and exquisite quartz countertops.
- The large master bedroom suite is a serene retreat, offering two walk-in closets and a breathtaking master bath, showcasing a soaking tub and optional jacuzzi.
- Central to the upstairs bedroom, the open bonus room opts for an extra loft or for multi-generation entertaining.

Plan G - THE MAISON

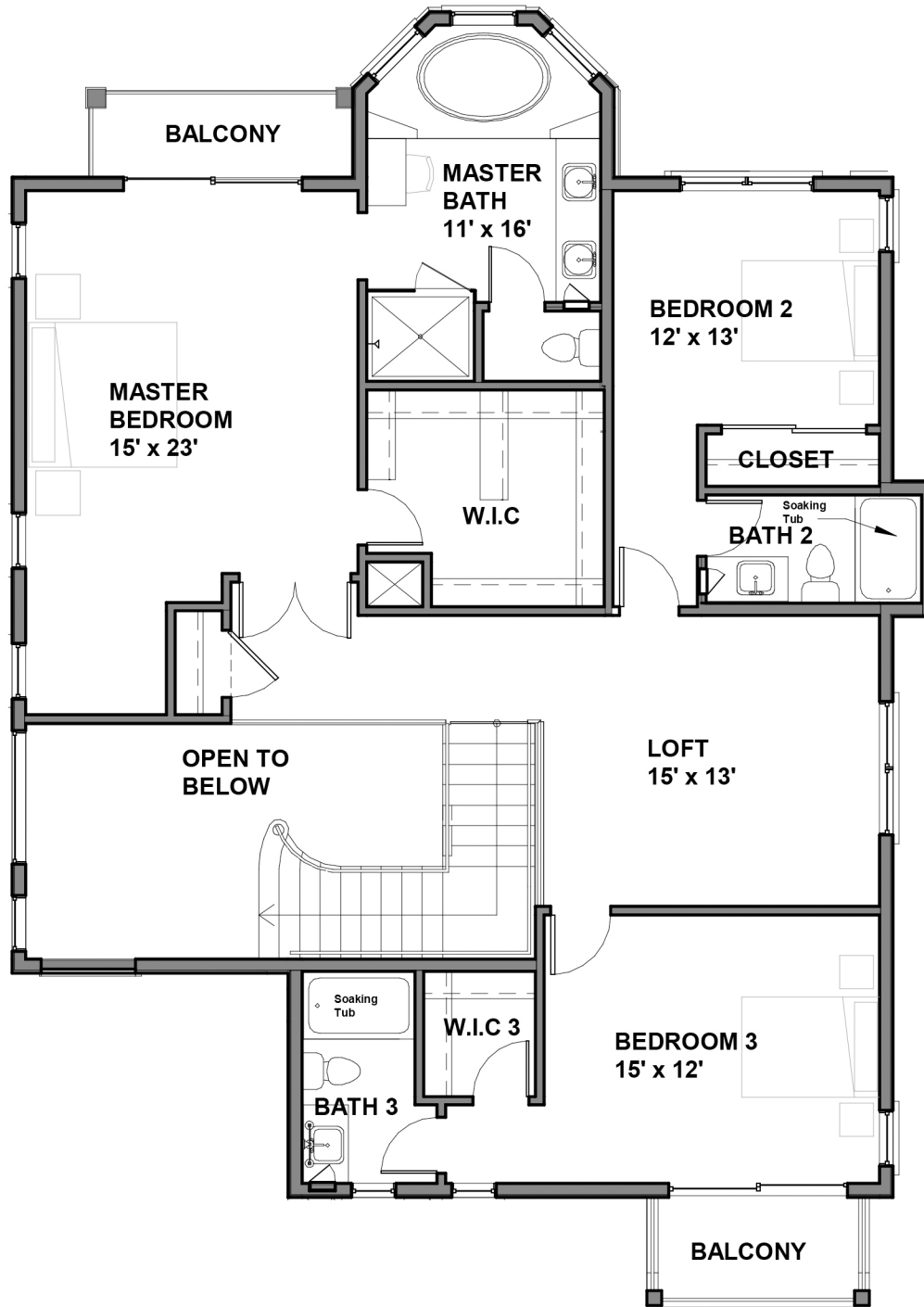
TOYON SIGNATURE HOMES



1st FLOOR PLAN

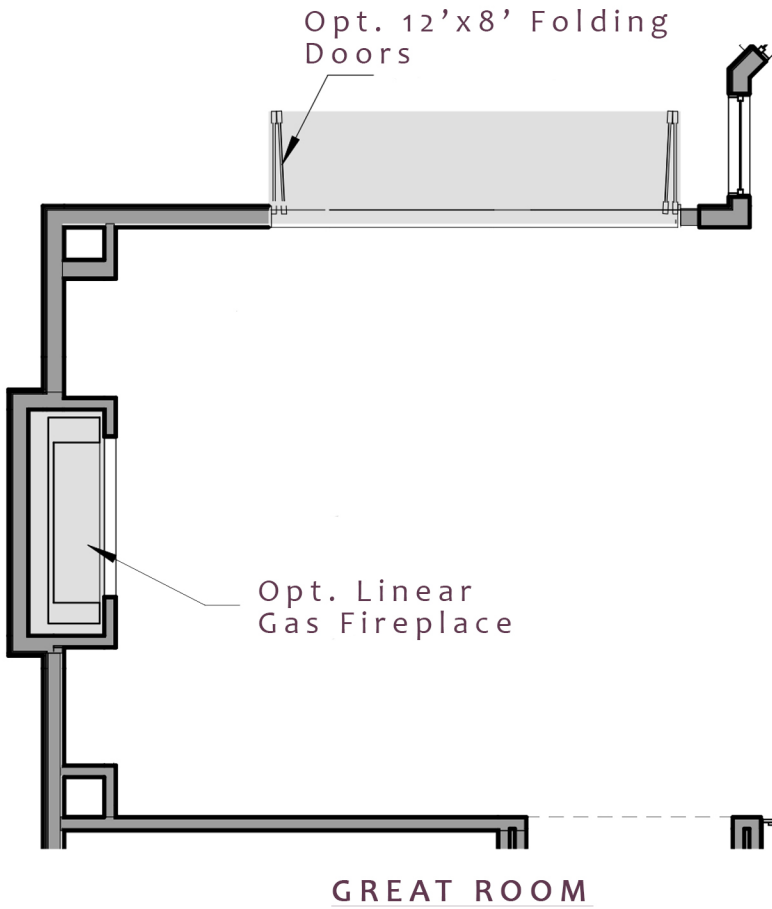
Plan G - THE MAISON

TOYON SIGNATURE HOMES

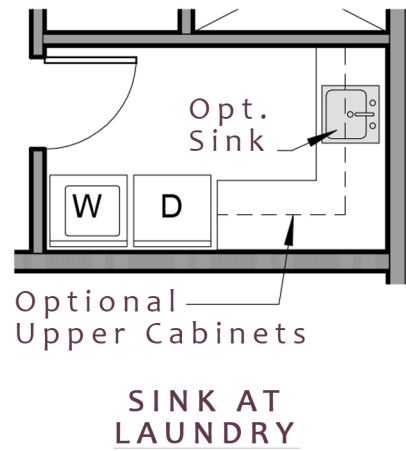
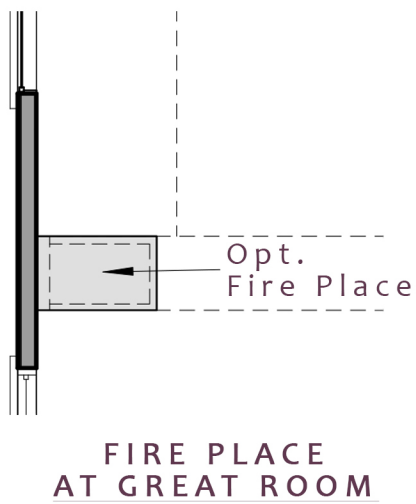
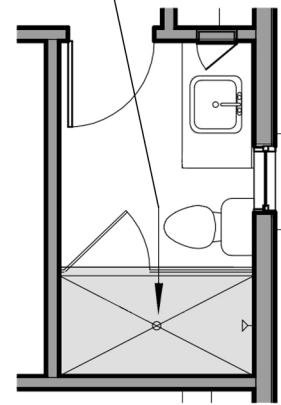


2nd FLOOR PLAN

Plan G - THE MAISON
TOYON SIGNATURE HOMES

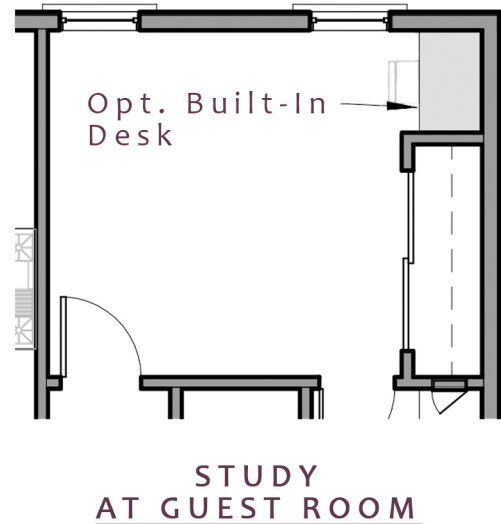
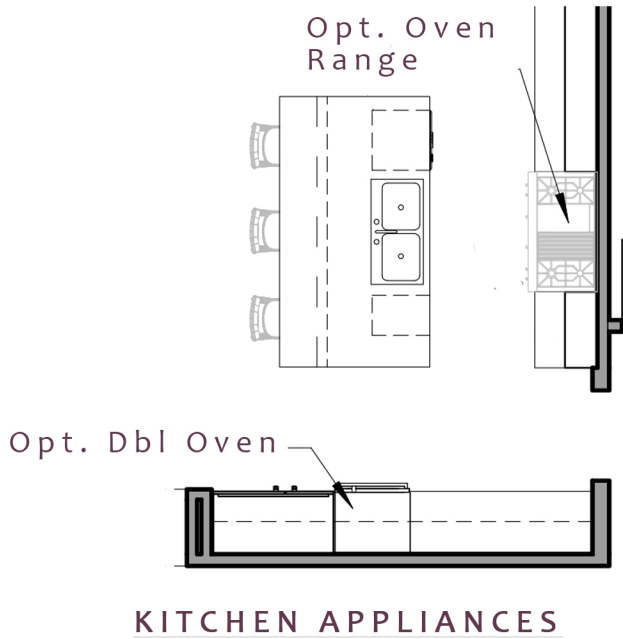


Opt. Shower w/ Glass Enclosure

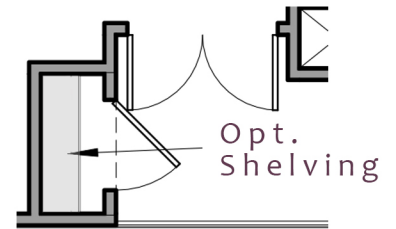
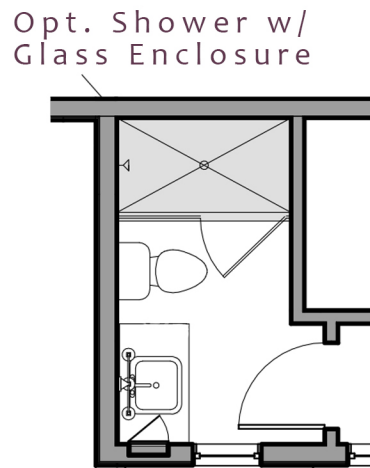


Plan G - THE MAISON

TOYON SIGNATURE HOMES



1st FLOOR OPTIONS CONT'D



2nd FLOOR OPTIONS

805-498-7786 | www.hydamhomes.com

In the interest of continuous improvement, Hydam Homes LLC reserves the right to modify or change floor plans, materials and features without prior notice or obligation. Your sales agreement will contain all current information. All renderings are the artists concept and are not intended to be representative of specific architectural details. This is not an offering where prohibited by law.

Rev. 10-05-21

